

Release Notes v9.1

Added Hierarchical Category Names

SaffronMemoryBase® introduces hierarchical category support so the user can create spaces with a more query-friendly representation of their data. The hierarchy can reflect either your entity taxonomy, document structure, or both. Query and result terms can also be controlled to represent any level of the hierarchy by using new wild card expressions.

Hierarchical Document Enhancements

Leveraging the new hierarchical document support, introduced in v9.0, the user can now restructure documents from database sources. To reorganize data into hierarchical segments, simply pull out the hierarchical keys and let the SaffronMemoryBase ETL process re-sequence the documents.

Query Templates Hide Complex Details

Query templates are a time-saving feature for system admins and application developers to simplify complicated queries by hiding all the detailed cryptic query language from the end-user. If you want to surface certain variables to the user, then you can selectively variablize those places in the URL.

Performance, Reliability, Scalability and Robustness

- Support for larger ingestion packet sizes.
- Support for larger Saffron store workspace files.
- Improved management of intermediate ingestion data.
- All database names have global names which allow for central administration of metadata, if desired.

Job Control Improvements

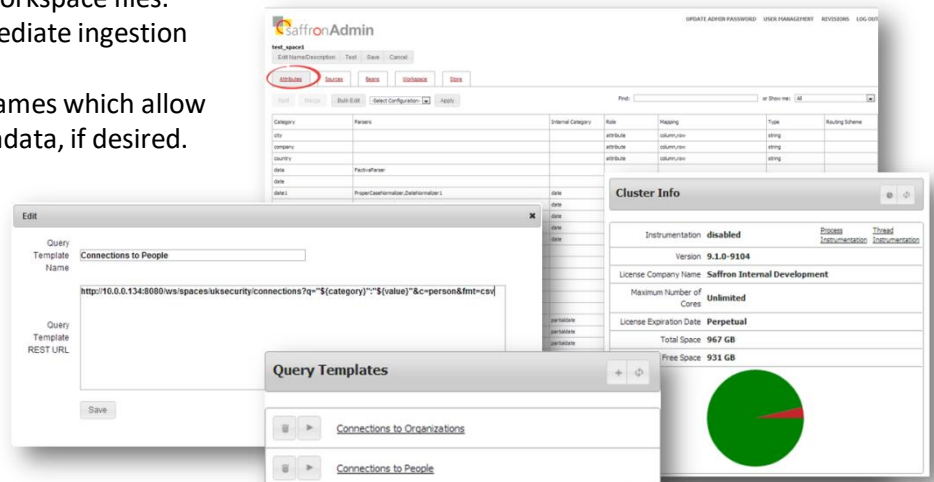
- Reworked crash recovery to allow flexibility of recovering the space, only if necessary, as well as faster start up.
- Cmd line 'cluster stop' pauses any active ingestion.

System Monitoring

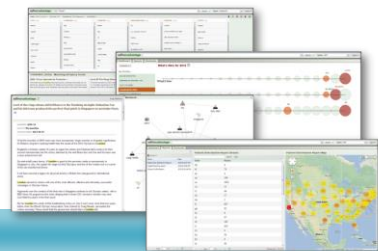
- Check status of jobs before stopping/killing cluster to ensure jobs are in a stable state to clearly recover.
- Added Saffron-specific ganglia plugins so they can be monitored in real-time, in addition to the current performance log.

Other New v9.1 Features

- Various usability enhancements to the SaffronAdmin™ space attribute table, including a new parser path filter and improved multi-selection for easier batch operations.
- Date bean now includes bounds checking min/max values.
- Extractor beans can now normalize entities to a single category, either within a single extraction process or across all extraction processes.
- Added a .csv output option for analogies, attributes, classifications, connections trends and help REST APIs.
- Added Help REST APIs to enable quick reference query params.
- AQL is no longer case sensitive, even in literal strings, and now has as an enhanced wildcard syntax.



SaffronAdvantage™: The All-in-One Sense-Making, Information-Discovery, Experienced-Base, Decision-Supporting Tool.



Release Notes v9.1

Experience the Revamped Interface

The key ingredient to the SaffronAdvantage user interface is its simplicity. We've freshened the interface with a back-to-basics approach, giving it a cleaner design for a more pleasant user experience. The redesign offers:

- Minimalist approach with simpler, solid color combinations and rich gradients.
- New typeface for easier on-screen reading and small screen legibility, optimal for a good reading rhythm.
- Collapsed content, text-based buttons and context-driven menus for less clutter.
- Rounded corners for effective maps and diagrams and an overall aesthetic appeal.



Create and Share Reports

Share analysis across all users with access to space reports that can be exported as a .csv or html file. You can configure SaffronAdvantage to run five standard reports:

- Trends: see trending patterns between two variables
- Similarity: compare similarities in connections.
- Connections: see customized "concepts" in your data.
- Classification: tracks trends of class types over time.
- Timeline – shows you "things" that are trending over time.

Apply Date Filters to Views

Apply date range filtering to customize your results for each View. Choose from a list of pre-populated filters - *past month, past three months, past six months, past year or anytime* – or select Custom Date Range to create your own date filter.

Search Hierarchical Categories

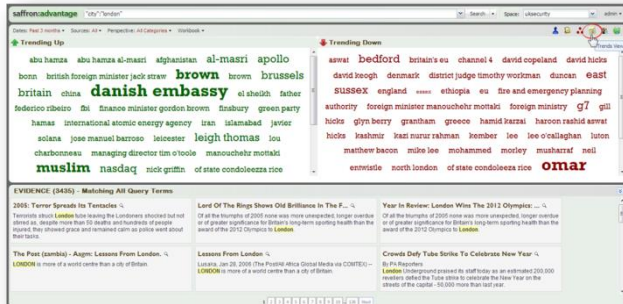
SaffronAdvantage now supports hierarchical category queries for more powerful query expressions that more closely represent the taxonomy of your data.

Explore Resources Multiple Ways

- Hover over a resource snippet to increase the box size for easier viewing.
- Click on the magnifying glass widget and a popup box displays the resource document in its entirety.
- Click on a resource title to open the entire document in a new window.

View Trending Connections at Glance

The Trends View now separates those connections that are trending up from those trending down for a quick glance at what's new, relevant, changing in status, etc.



Use Heat Maps to Find Highly Associated Connections

The new heat maps now show the geo-distribution of the connections. The darker the color (red being the darkest), the more intensely represented the connection.

Usability Enhancements

- Added "About" and "Help" options to the admin pull down.
- Made the SaffronAdvantage logo a breadcrumb to return you to the dashboard.